



# OKIDATA®

## 321 Turbo

### Printer Setups

---

# OkiData 321 Turbo Printer Setups

There are 4 steps to properly setup your OkiData 321 Turbo Printer:

1. Proper Driver Installation in Windows
2. Performing the proper GSI Service Bulletin
3. Programming the Menu on the 321 Turbo
4. Setting the Top of Form on the 321 Turbo

## **1. Proper Driver Installation in Windows**

The default driver that may load when installing the Okidata 321 may be the Okidata 320 driver. Saleslifter Pro needs the OkiData 321 Turbo /d (IBM) driver. This driver handles longer forms and doesn't have issues with left hand margins.

Under no circumstances should you use the Okidata 320 driver. You MUST use the OkiData 321 Turbo /d (IBM) driver.

Once this driver is installed you should right click on the driver in windows control panel and then left click on properties to enter the properties for this driver. Click on the Advanced Tab at the top then about half way down the window will be a setting for "Print Directly to the Printer". You should choose that setting the click Apply and OK then that window will close leaving you back at the installed printer window where you see your icons that show the installed printers.

## **2. Performing the proper GSI Service Bulletin**

See next page

# GSI Technical Service Bulletin # 5

**Date:** 09-16-04

**Operating System:** *Windows XP Professional, Home, 2000*

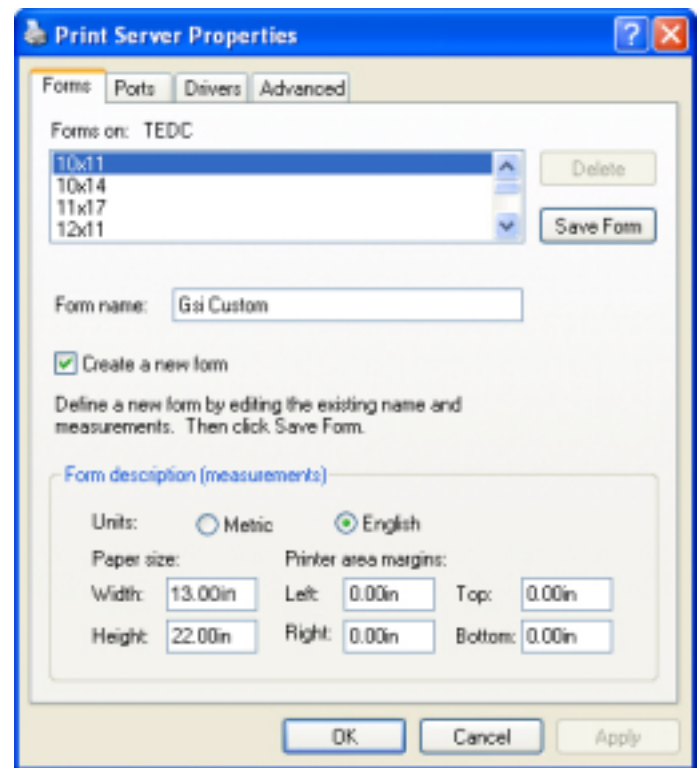
**Problem:** *OkiData 321 printer stops at 11 or 11½ inches when printing long contracts*

**Solution:** Under no circumstances should you use an Oki Data 320 Driver. You must use the 321 Turbo /d IBM driver. A new paper type needs to be created in Windows XP. This solution has been tested with the OkiData 321 Turbo /d IBM driver installed.

## **Creating a New Paper Type:**

1. Click on the **Start** Button
2. Click on **Control Panel**
3. Double Click on **Printers and Faxes**
4. You should now get the window with the installed printers
5. At the top of the window click on **File**
6. Then Click on **Server Properties**
7. Click to put a **check mark** in the Box that says **Create a New Form**
8. Enter **GSI Custom** into the **Form Description For:** field
9. At the bottom of the window change **Paper Size Width** to **13.00in**
10. Then change the **Paper Size Height** to **22.00in**
11. Then click on the **Save Form** Button
12. After you click **Save Form** the **OK** button will change to **Close**, then click **Close**

You should now be able to print long contracts from Saleslifter Pro.



### 3. Programming the Menu on the OkiData 321 Turbo

With the printer turned on and paper in the printer press and hold the "**Shift**" button on the front of the printer and then press the "**Menu**" button. The printer should now be in "**Menu**" mode. The word Menu should be lit up in red on the front of the printer to confirm you are in Menu Mode. You can now let go of all buttons.

The printers menu items are setup in Groups, you can see how the groupings are below. To edit a menu item you will use the "Group" button on the front of the printer to move on to the next Group, you will use the Item button to move from Item-to-Item within a Group, and you will use the "Set" button to change settings for an item.

Below is an example of a Menu that has already been setup. Items that need usually need to be changed in a typical installation are highlighted for your reference. When your are finished hold "Shift" then press "Menu" to exit Menu Mode.

Printer Control	Emulation Mode	IBM PPR
Font	Print Mode	Utility
Font	DRAFT Mode	HSD
Font	Pitch	10 CPI
Font	Proportional Spacing	No
Font	Style	Normal
Font	Size	Single
Symbol Sets	Character Set	Set I
Symbol Sets	Language Set	American
Symbol Sets	Zero Character	Slashed
Symbol Sets	Code Page	USA
→ Rear Feed	Line Spacing	6 LPI ←
→ Rear Feed	Form Tear-Off	500ms ←
→ Rear Feed	Skip Over Perforation	No
→ Rear Feed	Page Width	13.6 "
→ Rear Feed	Page Length	11 "
Bottom Feed	Line Spacing	6 LPI
Bottom Feed	Form Tear-Off	Off
Bottom Feed	Skip Over Perforation	No
Bottom Feed	Page Width	13.6 "
Bottom Feed	Page Length	11 "
→ Top Feed	Line Spacing	6 LPI ←
→ Top Feed	Bottom Margin	Invalid ←
→ Top Feed	Page Width	13.6 "
→ Top Feed	Page Length	17 " ←
→ Top Feed	Wait Time	1 sec ←
→ Top Feed	Page Length Control	by Actual Page Length
→ Set-Up	Graphics	Uni-directional
→ Set-Up	Receive Buffer Size	16K ←
→ Set-Up	Paper Out Override	Yes ←
→ Set-Up	Print Registration	0 ←
SET		
→ Set-Up	Operator Panel Function	Full Operation
Set-Up	Reset Inhibit	No
Set-Up	Print Suppress Effective	Yes
Set-Up	Auto LF	No
Set-Up	Auto CR	No
Set-Up	SI Select Pitch (10CPI)	17.1 CPI
Set-Up	SI Select Pitch (12CPI)	12 CPI
→ Set-Up	Time Out Print	Valid ←
→ Set-Up	Auto Select	Yes ←
Set-Up	Centering Position	DEFAULT
Set-Up	CSF Type	Wide
Set-Up	ESC SI Pitch	17.1 CPI
Parallel I/F	I-Prime	Buffer Print
Parallel I/F	Pin 18	+5v
Printer Control	Emulation Mode	IBM PPR

## 4. Setting the Top of Form on the OkiData 321 Turbo

Feed a single sheet of paper into the top of the printer as if it was a form.

Hold the "Shift" button down on the front of the printer with your left hand

While holding the "Shift" button with your left hand press and hold with your right hand the "Micro Feed Down" button. You will hear the printer clicking as it micro feeds the paper back down into the printer. You should hold this position until it stops feeding down, then you can let go of all buttons.

You can now press the FF/LOAD button and the piece of paper will get kicked out.

Your Top of Form is now set.