



# Configuration Guidelines for: **Saleslifter • Pro**

Saleslifter Pro will function under several different hardware configurations. Below are several examples of the most common and Genesys recommended configurations. It is very important to remember that Saleslifter Pro when running in a network environment requires a **"Mapped Network Drive"**. Simply sharing the sls pro folder or sharing the drive will not work. A "Mapped Network Drive" is REQUIRED. It is recommended that if you are installing Saleslifter Pro in a Stand-Alone single computer environment that you accept the default install location. When loading Saleslifter Pro on a File Server; choose the option during the installation process for **"Stand Alone PC or Network Server"**. For Workstation installation please install the CD into the workstation and choose the option during the installation process for **"Client PC to run Saleslifter Pro from a Network Server"**. Simply making an icon on the desktop will work but the VIN decoder will not register with the Windows Registry unless you install the workstation from the CD

## Stand Alone

Stand Alone operation requires no special Network Configuration



## 2 Station Network

There are 2 ways to setup a network when you are going to be operating with 2 computers. Fig. 1 displays connecting the 2 computers together with a direct cable. If using RJ-45 cable then Pin 3 and Pin 6 need to be "Crossed-Over"

Fig. 2 shows an example of 2 computers connected via a Hub or Router. In either case Fig.1 or Fig. 2 you will need a "Mapped Network Drive" setup for Saleslifter Pro to function properly over the network.

Fig. 1

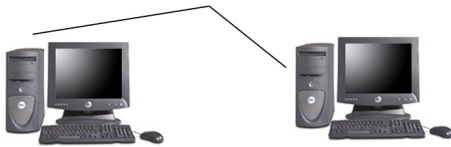


Fig. 2



## Multi-Station Network

There are also 2 ways to setup a Multi-Station network. Fig. 1 shows an example of a network with 4 computers hooked together using a Hub or Router. In this case one of the workstations will act as a Non-Dedicated server. This computer is the one that will have Saleslifter Pro loaded directly on it and the others will work from it.

Fig. 2 shows an example of a network with 4 workstations and 1 Dedicated Server. In this example Saleslifter Pro will be loaded directly on the Dedicated Server and the 4 workstations will work from it.

In either case Fig. 1 or Fig. 2 you will need a "Mapped Network Drive" setup for Saleslifter Pro to function properly over the network.

The "Mapped Network Drive" can either be the entire hard drive on the Dedicated or Non-Dedicated server or it can be the SLS Pro folder itself.

Fig. 1

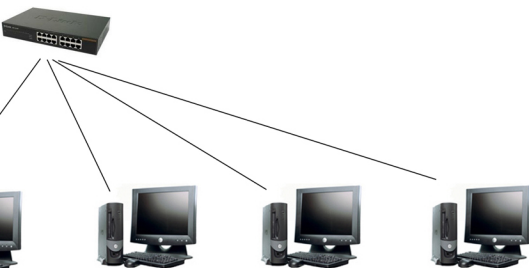


Fig. 2

